

# Consumer Price Index in the Month of Dey of the Year 1397<sup>1</sup>

## Increase in the Nation's Households Inflation Rate

The general index (base year 1395=100) stood at 154.7 in the month of Dey <sup>2</sup> of the year 1397 indicating a 2 percent rise compared with the previous month. In this month, the percentage change in the general index was 39.6 percent in contrast to the corresponding month of the previous year, that is to say that the nation's households spent, on average, 39.6 percent higher than the month of Dey in the year 1396 for purchasing **the same goods and services, which** increased by 2.2 percentage points over the previous month (37.4 percent). The twelve-month inflation rate ending the month of Dey of the year 1397 reached 20.6 percent which increased by 2.6 percentage points over the same information in the previous month (18 percent).

The CPI for the major groups of "food, beverages and tobacco" and "non-food items and services" increased by 2.8 and 1.6 percent, respectively in contrast to the previous month. The percentage changes in prices in the month of Dey of the year 1397 for these two groups were 57.8 and 32.4 percent compared with the month of Dey in the year 1396, respectively.

## Increase in the Nation's Urban Households Inflation Rate

The general price index for the nation's urban households in the month of Dey of the year 1397 stood at 154.1 showing a 2.0 percent increase from the last month. Percentage change in the general index was **39.0 percent** in comparison with the same month in the last year, which rose by 2.1 percentage points over the previous month (36.9 percent).

---

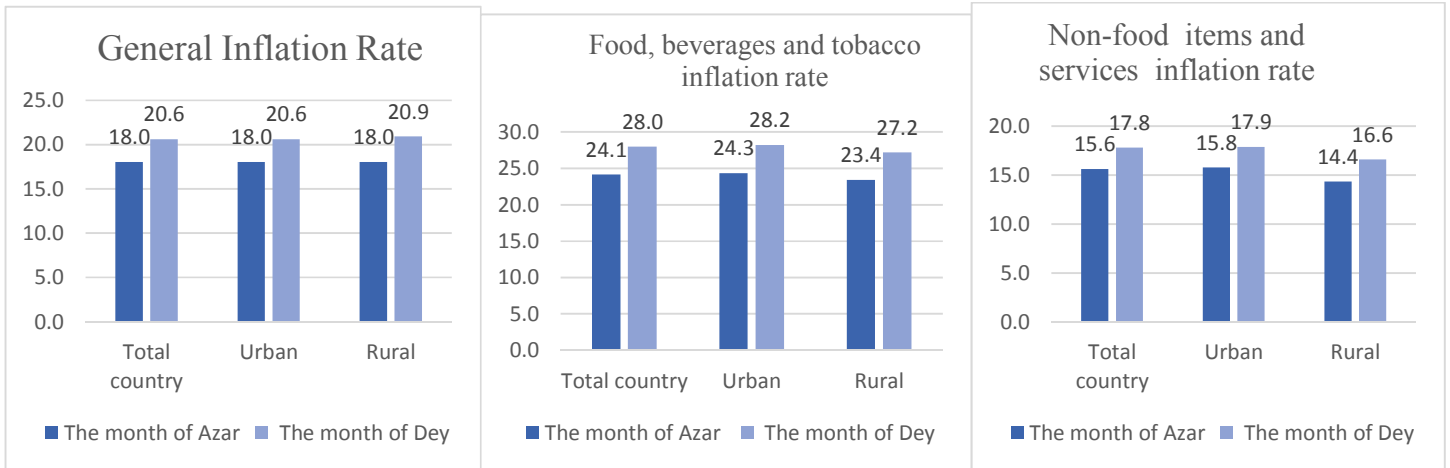
<sup>1</sup>It is the Iranian year which usually begins on the day of 21 March of the Gregorian calendar. To find the corresponding year of the Gregorian calendar, add 621 or 622 (depending on the time of the year) to a [solar Hijri](#) year. For example the corresponding year of the year 1397 in the Gregorian calendar is (21 March 2018-20 March 2019).

## 2 Iranian months and their equivalent in Gregorian calendar

Farvardin (21 March-20 April)	Mehr (23 September-22 October)
Ordibehesht (21 April-21 May)	Aban (23 October-21 November)
Khordad (22 May-21 June)	Azar (22 November-21 December)
Tir (22 June-22 July)	Dey (22 December-20 January)
Mordad (23 July-22 August)	Bahman (21 January-19 February)
Shahrivar (23 August-22 September)	Esfand (20 February-20 March)

## Increase in the Nation's Rural Households Inflation Rate

The general price index for the nation's rural households in the month of Dey of the year 1397 stood at 158.4 showing a 2.0 percent growth compared with the previous month. Percentage change in the general index was **42.7 percent** over the corresponding month in the previous year, which rose by 2.8 percentage points in contrast to the previous month (39.9 percent).



## Prices Changes in the Current Month

In the current month, all sub-classes of the general index experienced price rises. In the major group of "food, beverages and tobacco", the highest increase of prices belongs to "meat" (chicken, mutton and beef,) group. In the major group of "non-food items and services", the highest increase of prices goes to "hotel and restaurants" (foods served at restaurants) group, "furnishings, household appliances and routine household maintenance" (detergents) group, "clothing and footwear" group and "health and medical care"(different types of medicines) group compared with the previous month.

In the major group of "food, beverages and tobacco", the group "tobacco" experienced a fall in comparison with the previous month and in the major group of "non-food items and services", the computer accessories saw a fall in contrast to the previous month.

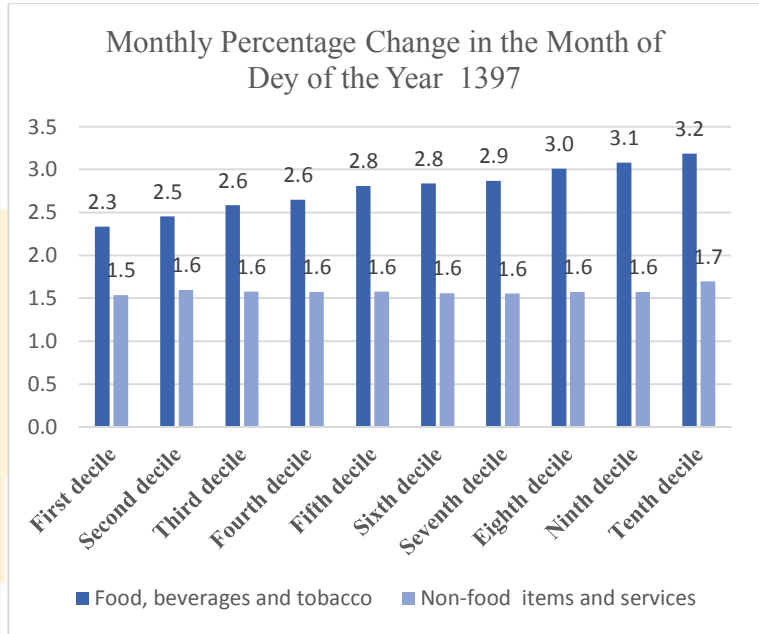
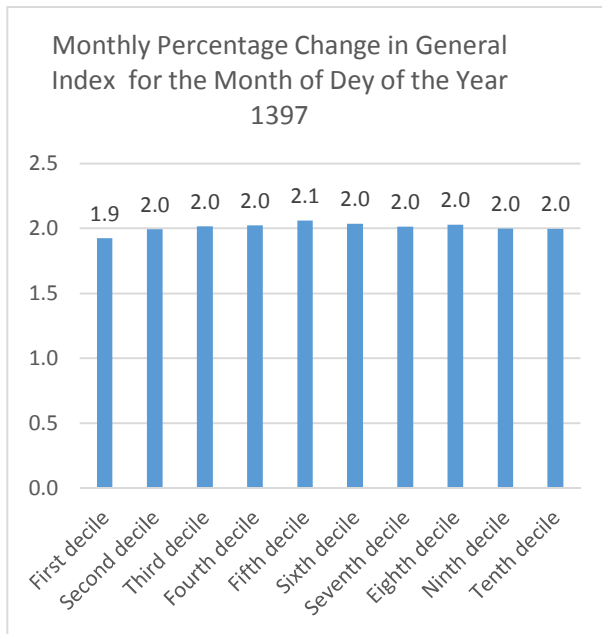
## Price Index Percentage Change in the Nation's Expenditure Deciles in the Current Month

The range of twelve-month inflation rate ending the month of Dey of the year 1397 for various deciles is fluctuating between 19.6 percent for the first decile (those with the lowest income ) and 22.3 percent for the tenth decile ( those with the highest decile).



Statistical Centre of Iran

Graph of the index percentage change for various expenditure deciles in general index and in the major groups of "food, beverages and tobacco" and "non-food items and services" compared with the previous month are shown as follows:



Statistical Centre of Iran

**Table 1. Consumer price index for household goods and services (CPI)**

1395=100

Description	General index		Food, beverages and tobacco		Non-food items and services	
	Month					
	Azar, the year 1397	Dey, the year 1397	Azar, the year 1397	Dey, the year 1397	Azar, the year 1397	Dey, the year 1397
Total country	151.7	154.7	176.5	181.6	142.4	144.7
Urban	151.0	154.1	177.2	182.2	142.3	144.7
Rural	155.3	158.4	174.2	179.2	142.9	144.8

**Table 2. Monthly percentage change in the index (CPI)**

Description	General index		Food, beverages and tobacco		Non-food items and services	
	Month					
	Azar, the year 1397	Dey, the year 1397	Azar, the year 1397	Dey, the year 1397	Azar, the year 1397	Dey, the year 1397
Total country	2.6	2.0	4.8	2.8	1.6	1.6
Urban	2.5	2.0	4.9	2.9	1.5	1.7
Rural	3.0	2.0	4.3	2.8	1.9	1.4

**Table 3. Percentage change of CPI compared with the same month of the previous year**

Description	General index		Food, beverages and tobacco		Non-food items and services	
	Month					
	Azar, the year 1397	Dey, the year 1397	Azar, the year 1397	Dey, the year 1397	Azar, the year 1397	Dey, the year 1397
Total country	37.4	39.6	53.9	57.8	30.9	32.4
Urban	36.9	39.0	54.2	58.0	30.8	32.3
Rural	39.9	42.7	52.7	56.7	31.1	33.0

**Table 4. Twelve-month inflation rate of CPI**

Description	General index		Food, beverages and tobacco		Non-food items and services	
	Month					
	Azar, the year 1397	Dey, the year 1397	Azar, the year 1397	Dey, the year 1397	Azar, the year 1397	Dey, the year 1397
Total country	18.0	20.6	24.1	28.0	15.6	17.8
Urban	18.0	20.6	24.3	28.2	15.8	17.9
Rural	18.0	20.9	23.4	27.2	14.4	16.6



Statistical Centre of Iran

**Consumer price index for all national households by major sections, some groups and goods categories in the month of Dey , the year 1397**  
**Base year:1395=100**

Description	Weight	Index	Percentage changes of CPI		
			Compared to the previous month	Compared to the corresponding month of the previous year	12 months ending to the current month compared to the corresponding month of the previous year
<b>General index</b>	<b>100.00</b>	<b>154.7</b>	<b>2.0</b>	<b>39.6</b>	<b>20.6</b>
<b>1. Food and non-alcoholic beverages</b>	<b>26.64</b>	<b>179.9</b>	<b>3.0</b>	<b>56.1</b>	<b>26.8</b>
Food	25.55	179.8	3.1	55.9	26.6
Bread and cereals	6.67	141.9	1.0	28.7	16.8
Meat, white meat and related products	5.91	205.7	9.8	76.5	32.7
Red and poultry meat	5.14	207.6	10.8	75.6	32.7
Fish and seafood	0.77	193.7	3.2	82.5	33.2
Milk, cheese and eggs	2.80	173.2	0.8	48.8	28.8
Oils and fats	1.29	165.9	0.6	48.2	24.3
Fruit and dried fruit	3.43	203.7	0.9	76.6	38.6
Vegetables ( pulses and vegetables)	3.02	198.5	0.7	51.7	20.7
Sugar, jam, honey, chocolate and confectionery ( sugar, sugar lump and confectionery )	1.44	147.3	1.3	37.7	17.4
Food products n.e.c*	0.98	224.1	1.6	107.2	42.8
Tea, coffee, cocoa and fruit juice (non-alcoholic beverages)	1.10	181.6	1.0	60.7	31.7
<b>2.Tobacco</b>	<b>0.59</b>	<b>258.1</b>	<b>-3.0</b>	<b>137.9</b>	<b>82.6</b>
<b>3.Clothing and footwear</b>	<b>4.78</b>	<b>158.1</b>	<b>2.4</b>	<b>47.3</b>	<b>21.8</b>
<b>4.Housing, water, electricity, gas and other fuels</b>	<b>35.50</b>	<b>135.4</b>	<b>1.1</b>	<b>22.8</b>	<b>14.2</b>
Housing	31.12	136.7	1.1	24.2	16.2
Rentals for housing units (service)	30.72	136.6	1.1	24.1	16.2
Services for the maintenance and repair of the dwelling	0.41	138.6	2.5	28.7	15.0
Water, electricity and fuel	4.38	126.2	1.3	12.9	1.0
<b>5.Furnishings, household equipment and routine household maintenance</b>	<b>3.93</b>	<b>184.1</b>	<b>3.1</b>	<b>72.1</b>	<b>31.2</b>
<b>6. Health &amp; medical services</b>	<b>7.14</b>	<b>135.7</b>	<b>2.2</b>	<b>23.2</b>	<b>14.2</b>
<b>7.Transport</b>	<b>9.41</b>	<b>148.0</b>	<b>1.9</b>	<b>39.2</b>	<b>19.9</b>
<b>8.Communication</b>	<b>2.87</b>	<b>142.3</b>	<b>0.1</b>	<b>36.4</b>	<b>17.7</b>
<b>9. Recreation and culture</b>	<b>1.65</b>	<b>183.3</b>	<b>1.7</b>	<b>67.0</b>	<b>33.0</b>
<b>10. Education</b>	<b>1.86</b>	<b>143.0</b>	<b>1.3</b>	<b>22.8</b>	<b>16.0</b>
<b>11. Restaurants and hotels</b>	<b>1.44</b>	<b>144.9</b>	<b>3.7</b>	<b>33.1</b>	<b>16.2</b>
<b>12. Miscellaneous goods and services</b>	<b>4.18</b>	<b>166.2</b>	<b>1.8</b>	<b>50.5</b>	<b>27.5</b>

\*. Not elsewhere classified.

**Consumer price index for all urban households by major sections, some groups and goods categories in the month of Dey, the year 1397**  
**Base year:1395=100**

Description	Weight	Index	Percentage changes of CPI		
			Compared to the previous month	Compared to the corresponding month of the previous year	12 months ending to the current month compared to the corresponding month of the previous year
<b>General index</b>	<b>100.00</b>	<b>154.1</b>	<b>2.0</b>	<b>39.0</b>	<b>20.6</b>
<b>1. Food and non-alcoholic beverages</b>	<b>24.53</b>	<b>180.8</b>	<b>3.0</b>	<b>56.6</b>	<b>27.2</b>
Food	23.57	180.8	3.1	56.5	27.0
Bread and cereals	5.98	142.0	1.1	28.5	16.5
Meat, white meat and related products	5.54	206.3	9.5	76.9	33.1
Red and poultry meat	4.79	208.2	10.5	76.1	33.1
Fish and seafood	0.76	194.3	3.3	82.7	33.3
Milk, cheese and eggs	2.70	175.1	1.0	50.3	29.2
Oils and fats	1.15	164.2	0.7	45.3	23.5
Fruit and dried fruit	3.31	207.1	0.3	78.2	39.9
Vegetables ( pulses and vegetables)	2.70	196.2	1.0	51.0	20.3
Sugar, jam, honey, chocolate and confectionery ( sugar, sugar lump and confectionery)	1.30	148.9	1.4	38.4	17.8
Food products n.e.c*	0.89	224.8	1.7	107.0	43.1
Tea, coffee, cocoa and fruit juice (non-alcoholic beverages)	0.96	180.5	1.0	59.3	31.4
<b>2.Tobacco</b>	<b>0.50</b>	<b>252.4</b>	<b>-2.6</b>	<b>131.7</b>	<b>79.9</b>
<b>3.Clothing and footwear</b>	<b>4.52</b>	<b>157.5</b>	<b>2.4</b>	<b>46.8</b>	<b>21.5</b>
<b>4.Housing, water, electricity, gas and other fuels</b>	<b>38.07</b>	<b>136.3</b>	<b>1.2</b>	<b>23.6</b>	<b>14.8</b>
Housing	34.10	137.3	1.1	24.7	16.5
Rentals for housing units (service)	33.73	137.2	1.1	24.6	16.5
Services for the maintenance and repair of the dwelling	0.37	142.8	2.9	32.0	16.4
Water, electricity and fuel	3.97	127.7	2.0	14.2	1.2
<b>5.Furnishings, household equipment and routine household maintenance</b>	<b>3.64</b>	<b>181.9</b>	<b>3.1</b>	<b>70.0</b>	<b>30.5</b>
<b>6. Health &amp; medical services</b>	<b>7.13</b>	<b>135.9</b>	<b>2.3</b>	<b>23.5</b>	<b>14.2</b>
<b>7.Transport</b>	<b>9.44</b>	<b>149.3</b>	<b>2.0</b>	<b>40.4</b>	<b>20.5</b>
<b>8.Communication</b>	<b>2.85</b>	<b>142.4</b>	<b>0.1</b>	<b>36.7</b>	<b>17.8</b>
<b>9. Recreation and culture</b>	<b>1.64</b>	<b>183.8</b>	<b>1.8</b>	<b>67.2</b>	<b>33.2</b>
<b>10. Education</b>	<b>2.02</b>	<b>142.9</b>	<b>1.3</b>	<b>23.1</b>	<b>16.1</b>
<b>11. Restaurants and hotels</b>	<b>1.54</b>	<b>144.8</b>	<b>3.8</b>	<b>33.2</b>	<b>16.2</b>



Statistical Centre of Iran

<b>12. Miscellaneous goods and services</b>	<b>4.13</b>	<b>166.3</b>	<b>1.8</b>	<b>50.3</b>	<b>27.8</b>
---	-------------	--------------	------------	-------------	-------------

\*. Not elsewhere classified.



Statistical Centre of Iran

**Consumer price index for all rural households by major sections, some groups and goods categories in the month of Dey, the year 1397**  
**Base year:1395=100**

Description	Weight	Index	Percentage changes of CPI		
			Compared to the previous month	Compared to the corresponding month of the previous year	12 months ending to the current month compared to the corresponding month of the previous year
<b>General index</b>	<b>100.00</b>	<b>158.4</b>	<b>2.0</b>	<b>42.7</b>	<b>20.9</b>
<b>1. Food and non-alcoholic beverages</b>	<b>38.48</b>	<b>176.4</b>	<b>3.2</b>	<b>54.0</b>	<b>25.5</b>
Food	36.60	176.0	3.3	53.5	25.2
Bread and cereals	10.56	141.8	0.9	29.5	17.7
Meat, white meat and related products	7.96	203.6	10.9	74.7	31.3
Red and poultry meat	7.10	205.2	11.9	73.9	31.1
Fish and seafood	0.86	190.7	2.9	81.8	32.9
Milk, cheese and eggs	3.33	164.9	-0.5	41.9	26.7
Oils and fats	2.06	171.2	0.4	57.4	26.5
Fruit and dried fruit	4.10	188.4	3.8	68.8	32.5
Vegetables ( pulses and vegetables)	4.82	206.0	-0.2	53.7	22.2
Sugar, jam, honey, chocolate and confectionery ( sugar, sugar lump and confectionery )	2.25	142.2	0.9	35.4	15.9
Food products n.e.c*	1.53	221.7	1.2	107.8	41.9
Tea, coffee, cocoa and fruit juice (non-alcoholic beverages)	1.88	184.7	1.1	64.4	32.5
<b>2.Tobacco</b>	<b>1.14</b>	<b>271.9</b>	<b>-3.8</b>	<b>153.1</b>	<b>89.0</b>
<b>3.Clothing and footwear</b>	<b>6.28</b>	<b>160.5</b>	<b>2.3</b>	<b>49.6</b>	<b>22.9</b>
<b>4.Housing, water, electricity, gas and other fuels</b>	<b>21.11</b>	<b>126.0</b>	<b>0.2</b>	<b>14.4</b>	<b>8.2</b>
Housing	14.47	128.1	0.8	17.1	12.2
Rentals for housing units (service)	13.87	128.3	0.8	17.1	12.3
Services for the maintenance and repair of the dwelling	0.60	124.1	1.1	17.1	9.9
Water, electricity and fuel	6.64	121.3	-1.1	8.8	0.1
<b>5.Furnishings, household equipment and routine household maintenance</b>	<b>5.53</b>	<b>192.1</b>	<b>2.9</b>	<b>79.7</b>	<b>33.9</b>
<b>6. Health &amp; medical services</b>	<b>7.19</b>	<b>134.6</b>	<b>1.9</b>	<b>21.6</b>	<b>13.8</b>
<b>7.Transport</b>	<b>9.26</b>	<b>140.9</b>	<b>1.5</b>	<b>32.3</b>	<b>16.4</b>
<b>8.Communication</b>	<b>2.97</b>	<b>141.6</b>	<b>-0.1</b>	<b>35.0</b>	<b>17.1</b>
<b>9. Recreation and culture</b>	<b>1.72</b>	<b>181.2</b>	<b>1.3</b>	<b>65.8</b>	<b>31.8</b>
<b>10. Education</b>	<b>0.95</b>	<b>144.8</b>	<b>0.3</b>	<b>19.0</b>	<b>15.3</b>
<b>11. Restaurants and hotels</b>	<b>0.89</b>	<b>145.6</b>	<b>3.0</b>	<b>32.6</b>	<b>16.2</b>
<b>12. Miscellaneous goods and services</b>	<b>4.48</b>	<b>165.6</b>	<b>1.8</b>	<b>51.2</b>	<b>25.9</b>

\*. Not elsewhere classified.





Statistical Centre of Iran

**Consumer price index for all national households and its percentage changes for special groups in the month of Dey, the year 1397**  
**Base year:1395=100**

Description	Weight	Index	Percentage changes of CPI				
			Compared to the previous month	Compared to the corresponding month of the previous year	12 months ending to the current month compared to the corresponding month of the previous year		
<b>General index</b>	100.00	154.7	2.0	39.6	20.6		
General index	Food, beverages and tobacco	27.24	181.6	2.8	57.8	28.0	
	Non-food products and services	72.76	144.7	1.6	32.4	17.8	
General index	Rent	30.72	136.6	1.1	24.1	16.2	
	General index (excluding rent)	69.28	162.8	2.4	46.4	22.6	
<i>General index</i>	Goods	Goods	50.87	172.1	2.5	54.3	25.4
		Durable goods	5.46	197.0	1.6	84.3	42.0
		Non-durable goods	40.33	169.1	2.7	50.1	23.1
		Semi-durable goods	5.1	169.5	2.3	57.8	26.1
	Services	49.13	136.7	1.4	24.1	15.6	
Food products		25.55	179.8	3.1	55.9	26.6	
Food products	Fresh food products	12.60	200.0	4.4	65.3	31.1	
	Miscellaneous food products	12.95	158.7	1.5	45.0	21.6	
General goods and services		8.77	118.1	0.7	9.7	2.6	

Statistical Centre of Iran



Statistical Centre of Iran

**Consumer price index for all urban households and its percentage changes for special groups in the month of Dey, the year 1397**  
**Base year:1395=100**

Description	Weight	Index	Percentage changes of CPI				
			Compared to the previous month	Compared to the corresponding month of the previous year	12 months ending to the current month compared to the corresponding month of the previous year		
<b>General index</b>	100.00	154.1	2.0	39.0	20.6		
General index	Food, beverages and tobacco	25.03	182.2	2.9	58.0	28.2	
	Non-food products and services	74.97	144.7	1.7	32.3	17.9	
General index	Rent	33.73	137.2	1.1	24.6	16.5	
	General index (excluding rent)	66.27	162.6	2.4	46.3	22.6	
<i>General index</i>	Goods	Goods	47.65	172.6	2.6	54.7	25.6
		Durable goods	5.55	196.9	1.7	84.2	42.0
		Non-durable goods	37.32	169.5	2.7	50.2	23.3
		Semi-durable goods	4.79	169.0	2.3	57.3	25.9
	Services	52.35	137.2	1.4	24.6	15.9	
Food products		23.57	180.8	3.1	56.5	27.0	
Food products	Fresh food products	12.30	200.1	4.3	65.6	31.5	
	Miscellaneous food products	11.26	159.8	1.5	45.6	21.8	
General goods and services		8.51	118.1	1.0	10.0	2.7	

Statistical Centre of Iran

**Consumer price index for all rural households and its percentage changes for special groups in the month of Dey, the year 1397**  
**Base year:1395=100**

Description	Weight	Index	Percentage changes of CPI				
			Compared to the previous month	Compared to the corresponding month of the previous year	12 months ending to the current month compared to the corresponding month of the previous year		
<b>General index</b>	100.00	158.4	2.0	42.7	20.9		
General index	Food, beverages and tobacco	39.62	179.2	2.8	56.7	27.2	
	Non-food products and services	60.38	144.8	1.4	33.0	16.6	
General index	Rent	13.87	128.3	0.8	17.1	12.3	
	General index (excluding rent)	86.13	163.3	2.2	46.7	22.3	
<i>General index</i>	Goods	Goods	68.84	170.3	2.3	52.8	24.4
		Durable goods	4.96	197.84	1.30	84.65	41.72
		Non-durable goods	57.03	167.85	2.45	49.36	22.63
		Semi-durable goods	6.85	171.25	2.29	59.73	26.81
	Services	31.16	132.09	1.13	20.01	13.16	
Food products		36.60	176.02	3.28	53.50	25.15	
Food products	Fresh food products	17.49	199.46	5.12	64.16	29.64	
	Miscellaneous food products	19.11	155.15	1.24	42.90	20.79	
General goods and services		11.35	117.9	-0.7	8.5	2.2	

**Table of the information on the general price index for all national households by the base year: Base year:1395=100**

Period	Index number	Monthly percentage change	Percentage change compared to the corresponding month in the previous year	12-month inflation
Farvardin, the year 1395	96.7	0.6	7.8	10.6
Ordibehesht, the year 1395	96.8	0.1	7.3	10.1
Khordad, the year 1395	97.5	0.7	6.8	9.5
Tir , the year 1395	98.5	1.1	6.6	9.0
Mordadr, the year 1395	99.5	1.0	7.2	8.6
Shahrivar, the year 1395	99.8	0.3	6.8	8.3
Mehr, the year 1395	100.3	0.5	6.6	7.9
Aban, the year 1395	100.6	0.3	6.2	7.6
Azar, the year 1395	101.4	0.8	5.7	7.2
Dey, the year 1395	102.2	0.8	6.2	7.0
Bahman, the year 1395	102.7	0.5	7.1	6.9
Esfand, the year 1395	104.0	1.2	8.2	6.9
Farvardin, the year 1396	105.5	1.4	9.0	7.0
Ordibehesht, the year 1396	105.3	-0.1	8.8	7.1
Khordad, the year 1396	105.5	0.2	8.3	7.2
Tir , the year 1396	106.6	1.0	8.2	7.4
Mordad, the year 1396	107.0	0.4	7.6	7.4
Shahrivar, the year 1396	107.0	0.0	7.2	7.4
Mehr, the year 1396	108.5	1.3	8.1	7.5
Aban, the year 1396	109.6	1.0	8.9	7.8
Azar, the year 1396	110.4	0.7	8.9	8.0
Day, the year 1396	110.9	0.4	8.5	8.2
Bahman, the year 1396	111.2	0.3	8.2	8.3
Esfand, the year 1396	111.4	0.2	7.2	8.2
Farvardin, the year 1397	112.9	1.3	7.0	8.1
Ordibehesht, the year 1397	114.1	1.1	8.3	8.0
Khordad, the year 1397	116.2	1.9	10.2	8.2
Tir , the year 1397	121.4	4.4	13.8	8.7
Mordad, the year 1397	127.7	5.2	19.3	9.7
Shahriva the year, 1397	134.6	5.4	25.7	11.3
Mehr, the year 1397	144.1	7.1	32.8	13.4
Aban, the year 1397	147.8	2.6	34.9	15.6
Azar, the year 1397	151.7	2.6	37.4	18.0
Dey, the year 1397	154.7	2.0	39.6	20.6

**Table of the information on general price index for all urban households by the base year: Base year:1395=100**

Period	Index number	Monthly percentage change	Percentage change compared to the corresponding month in the previous year	12-month inflation
Farvardin, the year 1395	96.9	0.7	7.9	10.8
Ordibehesht, the year 1395	97.0	0.1	7.6	10.3
Khordad, the year 1395	97.6	0.6	7.0	9.7
Tir, the year 1395	98.6	1.0	6.7	9.2
Mordadr, the year 1395	99.5	0.9	7.2	8.8
Shahrivar, the year 1395	99.8	0.3	6.6	8.4
Mehr, the year 1395	100.3	0.5	6.4	8.1
Aban, the year 1395	100.6	0.2	5.8	7.6
Azar, the year 1395	101.3	0.7	5.3	7.3
Dey, the year 1395	102.1	0.8	5.9	7.0
Bahman, the year 1395	102.6	0.5	6.8	6.8
Esfand, the year 1395	103.8	1.2	7.9	6.8
Farvardin, the year 1396	105.1	1.3	8.5	6.8
Ordibehesht, the year 1396	105.1	-0.1	8.3	6.9
Khordad, the year 1396	105.3	0.3	7.9	7.0
Tir, the year 1396	106.5	1.1	8.1	7.1
Mordad, the year 1396	106.9	0.4	7.4	7.1
Shahrivar, the year 1396	107.0	0.1	7.1	7.1
Mehr, the year 1396	108.5	1.4	8.1	7.3
Aban, the year 1396	109.5	1.0	8.9	7.5
Azar, the year 1396	110.3	0.7	8.9	7.8
Day, the year 1396	110.8	0.5	8.5	8.1
Bahman, the year 1396	111.2	0.3	8.4	8.2
Esfand, the year 1396	111.4	0.2	7.3	8.1
Farvardin, the year 1397	112.9	1.3	7.3	8.0
Ordibehesht, the year 1397	114.1	1.1	8.6	8.1
Khordad, the year 1397	116.1	1.7	10.2	8.2
Tir, the year 1397	121.5	4.6	14.0	8.8
Mordad, the year 1397	127.6	5.1	19.4	9.8
Shahriva the yarr, 1397	134.4	5.3	25.7	11.4
Mehr, the year 1397	143.6	6.8	32.4	13.4
Aban, the year 1397	147.3	2.6	34.5	15.6
Azar, the year 1397	151.0	2.5	36.9	18.0
Dey, the year 1397	154.1	2.0	39.0	20.6



Statistical Centre of Iran

**Table of the information on general price index for all rural households by the base year: Base year:1395=100**

Period	Index number	Monthly percentage change	Percentage change compared to the corresponding month in the previous year	12-month inflation
Farvardin, the year 1395	95.9	0.2	6.8	10.0
Ordibehesht, the year 1395	95.8	-0.1	5.7	9.4
Khordad, the year 1395	96.7	0.9	5.9	8.7
Tir , the year 1395	98.2	1.5	6.2	8.2
Mordadr, the year 1395	99.6	1.4	7.1	7.8
Shahrivar, the year 1395	99.9	0.3	7.1	7.5
Mehr, the year 1395	100.2	0.3	7.4	7.3
Aban, the year 1395	100.6	0.4	7.7	7.2
Azar, the year 1395	101.8	1.2	7.3	7.1
Dey, the year 1395	102.6	0.8	7.5	7.1
Bahman, the year 1395	103.3	0.7	8.3	7.1
Esfand, the year 1395	105.0	1.6	9.7	7.2
Farvardin, the year 1396	107.2	2.1	11.8	7.7
Ordibehesht, the year 1396	106.9	-0.3	11.5	8.1
Khordad, the year 1396	106.5	-0.3	10.1	8.5
Tir , the year 1396	107.3	0.7	9.2	8.7
Mordad, the year 1396	107.8	0.5	8.2	8.8
Shahrivar, the year 1396	107.5	-0.3	7.6	8.9
Mehr, the year 1396	108.5	1.0	8.3	8.9
Aban, the year 1396	109.9	1.2	9.2	9.0
Azar, the year 1396	111.0	1.0	9.0	9.2
Day, the year 1396	111.0	0.0	8.2	9.2
Bahman, the year 1396	111.0	0.0	7.4	9.1
Esfand, the year 1396	111.5	0.4	6.2	8.8
Farvardin, the year 1397	112.9	1.3	5.4	8.3
Ordibehesht, the year 1397	114.0	0.9	6.6	7.9
Khordad, the year 1397	117.1	2.7	9.9	7.9
Tir , the year 1397	120.9	3.2	12.7	8.2
Mordad, the year 1397	128.0	5.9	18.8	9.1
Shahriva the year, 1397	135.5	5.8	26.1	10.7
Mehr, the year 1397	146.8	8.3	35.3	13.0
Aban, the year 1397	150.8	2.7	37.3	15.4
Azar, the year 1397	155.3	3.0	39.9	18.0
Dey, the year 1397	158.4	2.0	42.7	20.9

### General consumer price index for national households

Base year:1395=100

Period	Year							
	1390	1391	1392	1393	1394	1395	1396	1397
<b>Year</b>	42.8	55.3	73.5	84.2	93.6	100.0	108.2	-
Month of Farvardin	38.4	47.9	67.2	78.9	89.8	96.7	105.5	112.9
Month of Ordibehesht	39.5	48.7	67.9	79.4	90.2	96.8	105.3	114.1
Month of Khordad	40.2	49.1	69.9	80.0	91.3	97.5	105.5	116.2
Month of Tir	40.9	51.1	71.5	82.0	92.4	98.5	106.6	121.4
Month of Mordad	41.9	52.3	72.8	83.2	92.8	99.5	107.0	127.7
Month of Shahrivar	42.6	53.4	73.7	83.9	93.5	99.8	107.0	134.6
Month of Mehr	43.3	56.1	74.8	85.0	94.1	100.3	108.5	144.1
Month of Aban	43.7	58.2	75.9	85.7	94.7	100.6	109.6	147.8
Month of Azar	44.4	59.0	76.3	87.5	95.9	101.4	110.4	151.7
Month of Dey	45.0	60.3	77.1	88.1	96.3	102.2	110.9	154.7
Month of Bahman	46.0	63.2	77.2	88.2	95.9	102.7	111.2	
Month of Esfand	47.1	65.0	77.7	88.7	96.1	104.0	111.4	

### Consumer price index for food, beverages and tobacco of national households

Base year:1395=100

Period	Year							
	1390	1391	1392	1393	1394	1395	1396	1397
<b>Year</b>	37.0	53.8	77.5	84.8	93.1	100.0	112.2	-
Month of Farvardin	32.8	44.7	71.5	82.8	91.0	95.1	111.7	118.5
Month of Ordibehesht	34.0	46.0	71.9	79.6	91.2	94.9	110.3	119.4
Month of Khordad	34.7	46.1	74.1	79.4	91.7	96.5	110.1	124.4
Month of Tir	35.0	49.6	75.9	81.8	92.6	97.6	110.6	128.3
Month of Mordad	35.6	51.0	77.4	83.7	92.9	99.7	110.9	140.0
Month of Shahrivar	36.0	51.5	77.8	84.5	92.7	100.0	109.5	149.0
Month of Mehr	36.7	53.9	78.8	84.7	91.9	99.3	109.7	161.8
Month of Aban	37.3	56.8	79.7	85.5	91.9	99.6	112.1	168.5
Month of Azar	38.3	57.8	79.6	89.4	94.8	101.5	114.7	176.5
Month of Dey	39.1	58.9	81.0	89.0	95.6	102.8	115.1	181.6
Month of Bahman	41.1	63.0	80.7	88.6	95.1	104.3	115.5	
Month of Esfand	43.2	66.9	81.4	89.0	95.2	108.7	115.8	

### Consumer price index for non-food items and services of national households

Base year:1395=100

Period	Year							
	1390	1391	1392	1393	1394	1395	1396	1397
<b>Year</b>	45.6	56.1	71.5	83.9	93.8	100.0	106.8	-
Month of Farvardin	41.2	49.5	65.0	76.9	89.2	97.3	103.1	110.8
Month of Ordibehesht	42.2	50.0	65.9	79.3	89.8	97.5	103.5	112.1
Month of Khordad	42.9	50.6	67.8	80.3	91.1	97.8	103.8	113.2
Month of Tir	43.9	51.8	69.4	82.0	92.3	98.8	105.1	118.8
Month of Mordad	45.0	52.9	70.6	83.0	92.8	99.5	105.6	123.1
Month of Shahrivar	45.7	54.3	71.7	83.7	93.9	99.8	106.1	129.2
Month of Mehr	46.5	57.2	72.8	85.2	95.2	100.7	108.0	137.4
Month of Aban	46.9	58.8	74.0	85.9	96.0	101.0	108.6	140.1
Month of Azar	47.4	59.6	74.6	86.5	96.5	101.3	108.8	142.4
Month of Dey	47.9	61.0	75.2	87.7	96.6	102.0	109.3	144.7
Month of Bahman	48.4	63.2	75.4	88.0	96.3	102.1	109.5	
Month of Esfand	49.0	64.1	76.0	88.5	96.5	102.2	109.8	

**General consumer price index for all urban households**

**Base year:1395=100**

Period	Year																
	1381	1382	1383	1384	1385	1386	1387	1388	1389	1390	1391	1392	1393	1394	1395	1396	1397
<b>Year</b>	11.2	12.7	14.6	16.4	18.6	21.8	27.4	30.0	34.2	43.2	55.5	73.3	84.2	93.7	100.	108.1	-
Month of Farvardin	10.7	12.0	13.7	15.9	17.5	20.3	24.7	29.1	31.6	38.7	48.3	67.0	78.7	89.7	96.9	105.1	112.9
Month of Ordibehesht	10.8	12.1	13.8	15.8	17.5	20.2	25.2	29.1	31.8	39.8	49.0	67.6	79.3	90.1	97.0	105.1	114.1
Month of Khordad	10.9	12.2	13.9	15.8	17.6	20.4	25.8	29.3	31.9	40.5	49.3	69.7	79.9	91.2	97.6	105.3	116.1
Month of Tir	11.0	12.6	14.3	16.0	18.1	21.1	26.4	29.4	32.3	41.4	51.3	71.3	81.9	92.4	98.6	106.5	121.5
Month of Mordad	11.1	12.6	14.4	16.0	18.2	21.1	26.9	29.7	32.8	42.4	52.4	72.6	83.2	92.8	99.5	106.9	127.6
Month of Shahrivar	11.1	12.6	14.5	16.1	18.4	21.3	27.6	29.8	33.2	43.0	53.6	73.5	83.9	93.6	99.8	107.0	134.4
Month of Mehr	11.2	12.9	14.8	16.6	18.8	22.1	28.3	30.0	34.0	43.8	56.3	74.5	85.1	94.3	100.	108.5	143.6
Month of Aban	11.3	13.0	14.9	16.7	18.9	22.4	28.6	30.3	34.5	44.3	58.3	75.7	85.7	95.0	100.	109.5	147.3
Month of Azar	11.4	13.1	15.0	16.8	19.2	22.7	29.0	30.7	35.2	44.9	59.1	76.1	87.4	96.2	101.	110.3	151.0
Month of Dey	11.5	13.3	15.2	16.9	19.6	23.2	28.9	30.7	36.5	45.5	60.4	77.0	88.1	96.4	102.	110.8	154.1
Month of Bahman	11.6	13.2	15.3	17.0	19.7	23.4	28.7	30.7	37.8	46.5	63.2	77.1	88.1	96.0	102.	111.2	
Month of Esfand	11.7	13.3	15.4	17.1	19.7	23.7	28.8	31.0	38.3	47.5	64.9	77.6	88.6	96.2	103.	111.4	

**Consumer price index for food, beverages and tobacco of all urban households**

**Base year:1395=100**

Period	Year																
	1381	1382	1383	1384	1385	1386	1387	1388	1389	1390	1391	1392	1393	1394	1395	1396	1397
<b>Year</b>	7.6	8.8	10.1	11.1	12.6	15.0	19.9	22.5	27.7	36.7	53.5	77.3	84.8	93.0	100.	112.3	-
Month of Farvardin	7.2	8.3	9.5	11.8	11.9	14.3	18.1	21.2	24.9	32.4	44.5	71.5	82.7	91.0	95.2	111.5	118.7
Month of Ordibehesht	7.4	8.3	9.5	11.1	11.8	14.0	18.3	21.0	24.8	33.7	45.8	71.8	79.4	91.0	95.1	110.1	119.7
Month of Khordad	7.4	8.5	9.6	10.9	11.8	14.1	18.7	21.4	24.7	34.4	45.9	74.0	79.3	91.7	96.6	110.2	124.6
Month of Tir	7.5	8.7	9.8	10.7	11.8	14.2	19.0	21.9	25.0	34.7	49.3	75.7	81.9	92.4	97.7	110.8	128.5
Month of Mordad	7.6	8.7	10.0	10.7	11.9	14.3	19.4	22.4	26.2	35.3	50.6	77.3	83.9	92.6	99.7	111.0	140.4
Month of Shahrivar	7.5	8.6	10.1	10.7	12.2	14.5	20.2	22.3	26.4	35.8	51.1	77.5	84.5	92.4	100.	109.7	149.6
Month of Mehr	7.4	8.6	10.2	11.0	12.5	14.8	20.6	22.4	27.4	36.4	53.6	78.6	84.7	91.8	99.2	109.9	161.8
Month of Aban	7.5	8.9	10.2	11.2	12.6	15.3	21.1	23.0	28.2	37.1	56.4	79.5	85.3	92.0	99.4	112.2	168.9
Month of Azar	7.7	9.1	10.4	11.3	13.3	15.8	21.4	23.6	29.9	38.1	57.5	79.4	89.5	94.9	101.	114.9	177.2
Month of Dey	8.0	9.2	10.5	11.4	13.7	16.0	21.0	23.6	31.0	38.9	58.5	80.8	88.8	95.6	102.	115.3	182.2
Month of Bahman	8.1	9.1	10.6	11.4	13.8	16.3	20.5	23.5	31.4	41.0	62.8	80.5	88.4	95.1	104.	115.7	
Month of Esfand	8.1	9.1	10.8	11.5	13.7	16.8	20.4	24.0	32.2	43.1	66.7	81.2	88.9	95.1	108.	115.9	

**Consumer price index for non-food items and services of all urban households**

**Base year:1395=100**

Period	Year																
	1381	1382	1383	1384	1385	1386	1387	1388	1389	1390	1391	1392	1393	1394	1395	1396	1397
<b>Year</b>	13.1	14.9	17.0	19.2	21.9	25.4	31.3	33.8	37.2	45.9	56.3	71.6	83.9	94.0	100.	106.7	-
Month of Farvardin	12.6	13.9	16.0	18.1	20.5	23.4	28.1	33.2	34.9	41.4	49.9	65.0	77.0	89.2	97.4	103.0	110.9
Month of Ordibehesht	12.6	14.1	16.1	18.2	20.7	23.5	28.8	33.3	35.2	42.4	50.3	65.9	79.2	89.8	97.6	103.4	112.3
Month of Khordad	12.7	14.2	16.2	18.3	20.7	23.7	29.4	33.3	35.6	43.2	50.8	67.8	80.1	91.1	97.9	103.7	113.2
Month of Tir	12.9	14.6	16.7	18.8	21.6	24.7	30.2	33.3	35.8	44.2	52.1	69.4	81.9	92.3	98.9	105.1	119.1
Month of Mordad	13.0	14.7	16.8	18.9	21.6	24.8	30.8	33.4	36.1	45.4	53.2	70.6	82.9	92.9	99.4	105.5	123.4
Month of Shahrivar	13.0	14.8	16.9	18.9	21.7	24.9	31.4	33.6	36.5	46.2	54.7	71.7	83.6	94.1	99.8	106.0	129.4
Month of Mehr	13.3	15.2	17.3	19.6	22.3	26.1	32.2	33.8	37.1	46.9	57.5	72.8	85.2	95.4	100.	108.0	137.5
Month of Aban	13.3	15.2	17.4	19.6	22.3	26.2	32.5	34.1	37.4	47.3	59.1	74.1	85.9	96.3	101.	108.6	140.1
Month of Azar	13.3	15.2	17.5	19.7	22.4	26.3	32.8	34.2	37.5	47.8	59.8	74.7	86.6	96.7	101.	108.8	142.3
Month of Dey	13.4	15.4	17.6	19.9	22.8	27.0	33.0	34.3	38.9	48.4	61.2	75.4	87.8	96.8	101.	109.3	144.7
Month of Bahman	13.5	15.4	17.7	20.0	22.8	27.1	33.0	34.4	40.7	48.8	63.3	75.6	88.1	96.4	102.	109.7	
Month of Esfand	13.5	15.5	17.8	20.0	22.9	27.4	33.1	34.5	41.1	49.3	64.1	76.1	88.5	96.7	102.	109.9	



**General consumer price index for all rural households**

**Base year:1395=100**

Period	Year																
	1381	1382	1383	1384	1385	1386	1387	1388	1389	1390	1391	1392	1393	1394	1395	1396	1397
<b>Year</b>	9.4	10.7	12.2	13.6	15.3	18.0	22.8	25.1	30.1	41.1	54.5	74.2	84.3	93.2	100.	108.8	-
Month of Farvardin	8.6	10.1	11.5	13.1	14.4	16.7	20.8	23.9	27.2	37.1	46.6	67.8	79.4	89.8	95.9	107.2	112.9
Month of Ordibehesht	9.0	10.3	11.7	13.3	14.6	16.9	21.3	23.9	27.4	38.2	47.5	68.8	80.0	90.7	95.8	106.9	114.0
Month of Khordad	9.0	10.4	11.8	13.3	14.7	17.0	21.9	24.1	27.4	38.9	48.0	70.7	80.4	91.4	96.7	106.5	117.1
Month of Tir	9.1	10.4	11.8	13.4	14.8	17.2	22.3	24.4	27.6	39.3	50.2	72.5	82.1	92.5	98.2	107.3	120.9
Month of Mordad	9.2	10.5	11.9	13.5	14.9	17.4	22.5	24.7	28.1	40.0	51.4	73.8	83.2	93.0	99.6	107.8	128.0
Month of Shahrivar	9.3	10.7	12.1	13.6	15.1	17.7	23.0	24.8	28.3	40.7	52.2	74.8	84.0	93.3	99.9	107.5	135.5
Month of Mehr	9.4	10.8	12.2	13.7	15.3	18.0	23.2	25.1	28.8	41.3	54.9	75.7	84.6	93.4	100.	108.5	146.8
Month of Aban	9.4	10.9	12.4	13.8	15.6	18.2	23.5	25.4	29.3	41.8	57.2	76.4	85.7	93.4	100.	109.9	150.8
Month of Azar	9.6	11.0	12.5	13.9	15.8	18.6	23.8	25.9	30.3	42.5	58.3	76.7	87.6	94.9	101.	111.0	155.3
Month of Dey	9.7	11.1	12.6	14.0	16.0	18.9	23.7	26.0	34.6	43.1	59.7	77.5	88.1	95.5	102.	111.0	158.4
Month of Bahman	9.8	11.2	12.8	14.1	16.3	19.3	23.5	26.2	35.7	44.4	62.8	77.6	88.3	95.4	103.	111.0	
Month of Esfand	10.0	11.4	12.9	14.3	16.5	19.5	23.6	26.7	36.5	45.6	65.2	78.2	88.8	95.7	105.	111.5	

**Consumer price index for food, beverages and tobacco of rural households**

**Base year:1395=100**

Period	Year																
	1381	1382	1383	1384	1385	1386	1387	1388	1389	1390	1391	1392	1393	1394	1395	1396	1397
<b>Year</b>	6.7	7.6	8.4	9.3	10.8	13.2	17.9	20.1	25.5	37.6	54.4	78.0	84.9	93.2	100.	111.8	-
Month of Farvardin	6.1	7.2	8.1	9.1	9.9	12.3	16.3	18.9	22.5	33.5	45.1	71.7	82.9	90.8	94.9	112.3	117.7
Month of Ordibehesht	6.4	7.3	8.1	9.2	10.0	12.4	16.7	18.9	22.6	35.0	46.4	72.2	80.3	91.7	94.3	110.9	118.3
Month of Khordad	6.4	7.3	8.1	9.2	10.1	12.5	17.2	19.1	22.4	35.6	46.7	74.4	79.6	91.8	95.9	109.9	123.7
Month of Tir	6.5	7.4	8.1	9.1	10.1	12.6	17.5	19.4	22.6	35.9	50.4	76.6	81.7	93.1	97.4	110.0	127.6
Month of Mordad	6.6	7.4	8.1	9.1	10.2	12.7	17.6	19.7	23.4	36.4	51.8	78.0	83.1	93.6	99.8	110.4	138.7
Month of Shahrivar	6.6	7.5	8.3	9.2	10.5	12.9	18.2	19.8	23.5	36.8	52.3	78.5	84.0	93.3	99.9	108.8	147.0
Month of Mehr	6.6	7.5	8.4	9.2	10.7	13.1	18.3	19.9	23.9	37.3	54.5	79.4	84.3	92.1	99.5	108.9	162.1
Month of Aban	6.6	7.6	8.5	9.3	11.0	13.4	18.7	20.3	24.6	37.8	57.3	80.0	85.7	91.6	100.	111.5	167.0
Month of Azar	6.8	7.7	8.6	9.4	11.3	13.7	19.1	21.0	26.1	38.8	58.3	80.2	89.2	94.4	102.	114.1	174.2
Month of Dey	6.9	7.8	8.8	9.5	11.6	14.1	18.7	21.1	30.2	39.6	59.5	81.4	89.4	95.5	103.	114.3	179.2
Month of Bahman	7.1	7.9	8.9	9.6	12.0	14.5	18.4	21.3	31.6	41.2	63.4	81.2	89.2	95.1	104.	114.6	
Month of Esfand	7.1	8.0	9.0	9.7	12.1	14.7	18.5	21.9	32.7	43.0	67.2	81.8	89.4	95.5	108.	115.3	

**Consumer price index for non-food items and services of rural households**

**Base year:1395=100**

Period	Year																
	1381	1382	1383	1384	1385	1386	1387	1388	1389	1390	1391	1392	1393	1394	1395	1396	1397
<b>Year</b>	12.8	14.7	17.0	19.2	21.1	23.8	28.5	31.0	35.1	43.8	54.6	71.3	83.9	93.3	100.0	106.9	-
Month of Farvardin	11.8	13.7	15.9	18.2	20.3	22.2	26.2	29.8	32.4	40.0	47.9	64.7	76.6	89.0	96.6	103.8	109.8
Month of Ordibehesht	12.2	14.0	16.2	18.4	20.5	22.4	26.8	29.9	32.8	40.7	48.4	66.1	79.8	89.9	96.9	104.2	111.1
Month of Khordad	12.3	14.2	16.4	18.6	20.6	22.7	27.5	30.1	33.0	41.5	49.1	67.7	81.0	91.1	97.3	104.3	112.7
Month of Tir	12.5	14.4	16.6	18.8	20.8	23.1	28.1	30.3	33.3	42.0	50.2	69.2	82.5	92.0	98.7	105.5	116.5
Month of Mordad	12.6	14.5	16.7	19.1	20.9	23.4	28.4	30.5	33.5	42.8	51.0	70.5	83.2	92.6	99.5	106.1	121.1
Month of Shahrivar	12.7	14.7	16.9	19.2	21.1	23.7	28.6	30.8	33.7	43.8	52.2	71.8	83.9	93.2	100.0	106.7	127.9
Month of Mehr	12.9	14.9	17.1	19.4	21.2	24.0	28.9	31.1	34.2	44.5	55.3	72.8	84.9	94.3	100.7	108.3	136.8
Month of Aban	13.0	15.0	17.3	19.5	21.3	24.3	29.1	31.4	34.5	45.0	57.1	73.7	85.7	94.8	101.0	108.7	140.2
Month of Azar	13.1	15.1	17.4	19.6	21.4	24.6	29.4	31.7	34.7	45.5	58.4	74.0	86.3	95.3	101.7	109.0	142.9
Month of Dey	13.2	15.3	17.6	19.8	21.6	24.9	29.5	31.8	39.1	45.9	59.8	74.4	87.2	95.5	102.4	108.9	144.8
Month of Bahman	13.3	15.4	17.7	19.9	21.7	25.3	29.6	31.9	39.5	46.8	62.4	74.7	87.7	95.7	102.6	108.7	
Month of Esfand	13.5	15.7	17.9	20.1	21.9	25.5	29.7	32.2	40.0	47.5	63.7	75.4	88.2	95.9	102.5	109.0	

**Annual and monthly percentage change in consumer price index for national households**

**Base year:1395=100**

Period	Year							
	1390	1391	1392	1393	1394	1395	1396	1397
<b>Year</b>	-	29.5	32.8	14.6	11.1	6.9	8.2	-
Month of Farvardin	-	1.9	3.4	1.4	1.2	0.6	1.4	1.3
Month of Ordibehesht	2.8	1.5	1.1	0.7	0.5	0.1	-0.1	1.1
Month of Khordad	1.8	0.9	2.9	0.7	1.1	0.7	0.2	1.9
Month of Tir	1.8	4.0	2.4	2.4	1.2	1.1	1.0	4.4
Month of Mordad	2.2	2.3	1.8	1.6	0.5	1.0	0.4	5.2
Month of Shahrivar	1.6	2.1	1.2	0.8	0.8	0.3	0.0	5.4
Month of Mehr	1.7	5.1	1.4	1.3	0.6	0.5	1.3	7.1
Month of Aban	1.1	3.7	1.5	0.9	0.6	0.3	1.0	2.6
Month of Azar	1.5	1.5	0.5	2.0	1.3	0.8	0.7	2.6
Month of Dey	1.4	2.2	1.1	0.7	0.3	0.8	0.4	2.0
Month of Bahman	2.2	4.7	0.1	0.1	-0.3	0.5	0.3	
Month of Esfand	2.3	2.9	0.8	0.6	0.2	1.2	0.2	

**Annual and monthly percentage change in consumer price index for food, beverages and tobacco of national households**

**Base year:1395=100**

Period	Year							
	1390	1391	1392	1393	1394	1395	1396	1397
<b>Year</b>	-	45.5	44.0	9.5	9.7	7.5	12.2	-
Month of Farvardin	-	3.5	6.9	1.8	2.2	-0.1	2.7	2.3
Month of Ordibehesht	3.8	2.8	0.6	-3.8	0.2	-0.2	-1.2	0.8
Month of Khordad	1.9	0.3	3.0	-0.3	0.6	1.6	-0.2	4.2
Month of Tir	0.8	7.6	2.4	3.0	1.0	1.2	0.5	3.2
Month of Mordad	1.7	2.7	2.0	2.3	0.3	2.1	0.3	9.1
Month of Shahrivar	1.3	1.0	0.5	0.9	-0.2	0.3	-1.3	6.4
Month of Mehr	1.8	4.8	1.3	0.2	-0.9	-0.7	0.2	8.6
Month of Aban	1.7	5.3	1.1	1.0	0.1	0.3	2.2	4.1
Month of Azar	2.7	1.8	-0.1	4.6	3.1	2.0	2.4	4.8
Month of Dey	2.2	1.9	1.8	-0.5	0.9	1.3	0.3	2.8
Month of Bahman	5.0	7.0	-0.4	-0.5	-0.5	1.5	0.3	
Month of Esfand	5.1	6.2	0.8	0.5	0.1	4.2	0.2	

**Annual and monthly percentage change in consumer price index for non-food items and services of national households**

**Base year:1395=100**

Period	Year							
	1390	1391	1392	1393	1394	1395	1396	1397
<b>Year</b>	-	23.1	27.6	17.3	11.8	6.6	6.8	-
Month of Farvardin	-	1.2	1.5	1.3	0.8	0.8	0.9	0.9
Month of Ordibehesht	2.4	0.9	1.4	3.1	0.7	0.2	0.3	1.2
Month of Khordad	1.7	1.1	2.9	1.2	1.4	0.3	0.3	0.9
Month of Tir	2.2	2.4	2.3	2.2	1.3	1.0	1.3	4.9
Month of Mordad	2.4	2.1	1.7	1.2	0.6	0.6	0.4	3.6
Month of Shahrivar	1.8	2.7	1.6	0.8	1.2	0.3	0.5	5.0
Month of Mehr	1.6	5.3	1.5	1.8	1.4	0.9	1.8	6.4
Month of Aban	0.9	2.9	1.7	0.8	0.9	0.2	0.6	2.0
Month of Azar	1.0	1.3	0.8	0.8	0.4	0.3	0.1	1.6
Month of Dey	1.1	2.3	0.8	1.4	0.1	0.6	0.4	1.6
Month of Bahman	1.1	3.6	0.3	0.3	-0.3	0.1	0.2	
Month of Esfand	1.1	1.3	0.7	0.6	0.2	0.1	0.2	

**Annual and monthly percentage change in consumer price index for all urban households**

**Base year:1395=100**

Period	Year																
	1381	1382	1383	1384	1385	1386	1387	1388	1389	1390	1391	1392	1393	1394	1395	1396	1397
<b>Year</b>	-	13.9	14.6	12.1	13.7	17.2	25.5	9.5	13.9	26.4	28.6	32.1	14.8	11.3	6.8	8.1	-
Month of Farvardin	-	3.0	3.4	3.7	2.6	2.6	4.0	1.2	1.8	0.8	1.7	3.2	1.4	1.2	0.7	1.3	1.3
Month of Ordibehesht	0.9	0.4	0.6	-1.2	0.3	-0.1	2.2	-0.1	0.5	2.9	1.4	1.0	0.7	0.5	0.1	-0.1	1.1
Month of Khordad	0.5	1.5	0.7	0.0	0.3	0.9	2.3	0.6	0.6	1.8	0.8	3.0	0.8	1.2	0.6	0.3	1.7
Month of Tir	1.7	2.7	2.7	1.4	3.0	3.2	2.3	0.6	1.0	2.1	3.9	2.3	2.5	1.2	1.0	1.1	4.6
Month of Mordad	0.4	0.5	0.9	0.3	0.5	0.3	1.9	1.0	1.8	2.4	2.3	1.8	1.6	0.5	0.9	0.4	5.1
Month of Shahrivar	0.1	-0.1	0.7	0.3	0.9	0.7	2.7	0.3	1.1	1.6	2.2	1.2	0.8	0.9	0.3	0.1	5.3
Month of Mehr	1.2	2.2	2.1	3.0	2.6	4.1	2.3	0.6	2.2	1.7	5.1	1.4	1.4	0.8	0.5	1.4	6.8
Month of Aban	0.4	1.0	0.5	0.7	0.5	1.3	1.4	1.2	1.5	1.1	3.5	1.6	0.8	0.7	0.2	1.0	2.6
Month of Azar	1.0	0.7	0.6	0.6	1.6	1.1	1.1	1.2	2.2	1.4	1.4	0.5	2.0	1.2	0.7	0.7	2.5
Month of Dey	1.3	1.1	1.2	1.0	1.9	2.2	-0.2	0.2	3.8	1.4	2.2	1.2	0.8	0.3	0.8	0.5	2.0
Month of Bahman	0.8	-0.2	0.4	0.4	0.5	0.9	-0.5	0.0	3.5	2.0	4.6	0.1	0.0	-0.4	0.5	0.3	
Month of Esfand	0.3	0.4	0.8	0.3	0.2	1.5	0.1	1.0	1.4	2.1	2.7	0.7	0.6	0.2	1.2	0.2	

**Annual and monthly percentage change in consumer price index for food, beverages and tobacco of all urban households**

**Base year:1395=100**

Period	Year																
	1381	1382	1383	1384	1385	1386	1387	1388	1389	1390	1391	1392	1393	1394	1395	1396	1397
<b>Year</b>	-	15.0	15.0	10.4	12.9	19.6	32.3	13.2	22.9	32.7	45.8	44.4	9.7	9.7	7.6	12.3	-
Month of Farvardin	-	2.5	4.0	9.4	3.3	3.9	7.3	3.6	4.0	0.7	3.3	7.1	1.9	2.4	0.1	2.6	2.4
Month of Ordibehesht	2.4	-0.7	0.0	-6.1	-0.8	-1.9	1.5	-0.7	-0.6	3.9	2.8	0.5	-4.1	0.0	-	-1.2	0.8
Month of Khordad	0.3	2.7	0.6	-1.7	0.1	0.8	2.1	1.8	-0.6	2.1	0.2	3.0	0.0	0.7	1.6	0.0	4.1
Month of Tir	1.0	2.0	2.3	-1.4	0.3	0.7	1.6	2.2	1.5	0.8	7.5	2.2	3.2	0.8	1.0	0.6	3.2
Month of Mordad	0.9	0.6	2.2	0.0	0.7	0.1	1.8	2.4	4.6	1.8	2.6	2.1	2.5	0.2	2.0	0.2	9.3
Month of Shahrivar	-0.7	-1.7	0.5	0.1	2.9	1.4	4.3	-0.5	0.9	1.4	0.9	0.4	0.7	-0.2	0.4	-1.2	6.5
Month of Mehr	-0.9	0.6	1.0	2.2	1.9	2.7	2.0	0.6	3.6	1.8	4.9	1.3	0.2	-0.7	-	0.2	8.1
Month of Aban	1.4	3.2	0.9	1.8	1.3	3.2	2.4	2.4	3.1	1.8	5.3	1.2	0.7	0.3	0.2	2.1	4.4
Month of Azar	2.4	2.3	1.3	0.9	5.4	2.9	1.4	2.7	5.9	2.7	1.9	-0.2	4.9	3.1	2.0	2.4	4.9
Month of Dey	2.9	0.6	1.6	1.6	2.7	1.6	-1.8	0.2	3.8	2.2	1.8	1.9	-0.7	0.8	1.3	0.4	2.9
Month of Bahman	1.9	-1.1	0.4	0.1	1.1	2.1	-2.3	-0.8	1.3	5.2	7.3	-0.5	-0.5	-0.6	1.5	0.4	
Month of Esfand	0.5	0.5	1.7	0.2	-0.4	3.1	-0.4	2.2	2.4	5.2	6.3	0.9	0.6	0.0	4.2	0.1	

**Annual and monthly percentage change in consumer price index for non-food items and services of all urban households**

**Base year:1395=100**

Period	Year																
	1381	1382	1383	1384	1385	1386	1387	1388	1389	1390	1391	1392	1393	1394	1395	1396	1397
<b>Year</b>	-	13.5	14.5	12.7	14.0	16.4	23.0	8.0	10.2	23.4	22.6	27.1	17.2	12.0	6.4	6.7	-
Month of Farvardin	-	3.2	3.2	1.5	2.3	2.1	2.7	0.3	0.9	0.7	1.1	1.5	1.2	0.7	0.8	0.9	1.0
Month of Ordibehesht	0.4	0.8	0.8	0.8	0.7	0.6	2.4	0.1	0.9	2.6	0.9	1.3	2.9	0.6	0.2	0.3	1.2
Month of Khordad	0.6	1.0	0.7	0.7	0.3	0.9	2.3	0.1	1.1	1.7	1.0	3.0	1.1	1.4	0.3	0.3	0.9
Month of Tir	2.0	2.9	2.9	2.4	4.0	4.2	2.6	-0.1	0.8	2.5	2.5	2.4	2.2	1.4	1.0	1.3	5.2
Month of Mordad	0.2	0.4	0.3	0.5	0.4	0.4	1.9	0.4	0.6	2.6	2.2	1.7	1.3	0.6	0.6	0.4	3.6
Month of Shahrivar	0.4	0.5	0.8	0.3	0.2	0.4	2.1	0.6	1.3	1.7	2.7	1.6	0.8	1.3	0.3	0.5	4.9
Month of Mehr	2.0	2.8	2.5	3.3	2.8	4.6	2.5	0.7	1.6	1.6	5.2	1.5	1.9	1.4	1.0	1.8	6.3
Month of Aban	0.1	0.2	0.4	0.3	0.2	0.6	1.0	0.7	0.8	0.9	2.8	1.8	0.8	0.9	0.2	0.6	1.9
Month of Azar	0.6	0.2	0.4	0.5	0.3	0.4	1.0	0.6	0.4	1.0	1.2	0.9	0.8	0.4	0.3	0.1	1.5
Month of Dey	0.7	1.3	1.1	0.8	1.6	2.5	0.5	0.1	3.7	1.1	2.3	0.9	1.4	0.0	0.6	0.5	1.7
Month of Bahman	0.4	0.1	0.5	0.5	0.2	0.4	0.2	0.3	4.6	0.9	3.5	0.3	0.3	-0.3	0.1	0.3	
Month of Esfand	0.2	0.3	0.4	0.4	0.4	0.9	0.3	0.4	0.9	1.0	1.2	0.7	0.6	0.2	0.1	0.2	

**Annual and monthly percentage change of consumer price index for all rural households**

**Base year:1395=100**

Period	Year																
	1381	1382	1383	1384	1385	1386	1387	1388	1389	1390	1391	1392	1393	1394	1395	1396	1397
<b>Year</b>	16.4	14.6	13.6	12.0	12.4	17.1	26.7	10.3	20.0	36.5	32.7	36.1	13.7	10.6	7.2	8.8	-
Month of Farvardin	3.9	1.5	1.3	1.2	1.1	1.1	6.6	1.3	1.9	1.7	2.4	3.9	1.5	1.2	0.2	2.1	1.3
Month of Ordibehesht	3.9	1.5	1.3	1.2	1.1	1.1	2.3	0.2	0.8	2.9	1.9	1.5	0.8	0.9	-0.1	-0.3	0.9
Month of Khordad	1.0	0.9	0.6	0.5	0.7	1.2	2.9	0.8	0.0	1.8	1.1	2.7	0.4	0.8	0.9	-0.3	2.7
Month of Tir	1.0	0.9	0.6	0.5	0.7	1.2	1.7	1.0	0.8	1.1	4.6	2.6	2.2	1.2	1.5	0.7	3.2
Month of Mordad	1.0	0.9	0.6	0.5	0.7	1.2	1.0	1.2	1.9	1.7	2.3	1.8	1.3	0.6	1.4	0.5	5.9
Month of Shahrivar	0.8	1.0	1.3	0.8	1.5	1.5	2.1	0.6	0.8	1.7	1.7	1.3	0.9	0.3	0.3	-0.3	5.8
Month of Mehr	0.8	1.0	1.3	0.8	1.5	1.5	0.8	0.9	1.6	1.5	5.1	1.3	0.8	0.1	0.3	1.0	8.3
Month of Aban	0.8	1.0	1.3	0.8	1.5	1.5	1.4	1.3	1.8	1.2	4.2	1.0	1.2	0.1	0.4	1.2	2.7
Month of Azar	1.3	1.0	1.1	0.8	1.5	1.9	1.5	2.1	3.5	1.7	1.9	0.4	2.2	1.6	1.2	1.0	3.0
Month of Dey	1.3	1.0	1.1	0.8	1.5	1.9	-0.7	0.4	14.2	1.4	2.3	1.0	0.6	0.6	0.8	0.0	2.0
Month of Bahman	1.3	1.0	1.1	0.8	1.5	1.9	-0.6	0.7	3.0	2.8	5.3	0.1	0.2	-0.1	0.7	0.0	
Month of Esfand	1.5	1.3	1.2	1.1	1.1	1.1	0.3	1.7	2.4	2.7	3.8	0.9	0.5	0.3	1.6	0.4	

**Annual and monthly percentage change of consumer price index for food, beverages and tobacco of all rural households**

**Base year:1395=100**

Period	Year																
	1381	1382	1383	1384	1385	1386	1387	1388	1389	1390	1391	1392	1393	1394	1395	1396	1397
<b>Year</b>	17.4	13.6	11.4	10.5	16.0	22.5	35.6	12.1	27.0	47.2	44.8	43.3	8.9	9.8	7.3	11.8	-
Month of Farvardin	4.4	1.2	0.8	1.1	1.4	1.2	11.3	2.3	3.0	2.3	4.7	6.8	1.3	1.5	-0.6	3.1	2.1
Month of Ordibehesht	4.4	1.2	0.8	1.1	1.4	1.2	2.4	0.0	0.5	4.5	3.0	0.7	-3.2	0.9	-0.6	-1.3	0.5
Month of Khordad	0.9	0.4	0.1	-0.5	0.6	0.8	3.2	1.2	-0.9	1.6	0.7	3.1	-0.9	0.1	1.7	-0.9	4.6
Month of Tir	0.9	0.4	0.1	-0.5	0.6	0.8	1.3	1.4	0.9	1.0	7.8	3.0	2.6	1.4	1.6	0.1	3.1
Month of Mordad	0.9	0.4	0.1	-0.5	0.6	0.8	0.9	1.5	3.2	1.4	2.9	1.8	1.8	0.6	2.4	0.3	8.7
Month of Shahrivar	0.4	1.0	1.5	0.8	2.6	1.7	3.3	0.6	0.8	1.1	0.9	0.7	1.1	-0.3	0.1	-1.5	6.0
Month of Mehr	0.4	1.0	1.5	0.8	2.6	1.7	0.5	0.6	1.6	1.3	4.2	1.1	0.4	-1.3	-0.4	0.1	10.
Month of Aban	0.4	1.0	1.5	0.8	2.6	1.7	2.2	1.8	2.7	1.4	5.2	0.7	1.6	-0.6	0.6	2.4	3.0
Month of Azar	2.1	1.3	1.6	1.0	2.8	2.7	2.1	3.5	6.3	2.5	1.7	0.3	4.1	3.0	2.0	2.3	4.3
Month of Dey	2.1	1.3	1.6	1.0	2.8	2.7	-2.0	0.4	15.6	2.0	2.1	1.5	0.2	1.2	1.0	0.2	2.8
Month of Bahman	2.1	1.3	1.6	1.0	2.8	2.7	-1.5	1.0	4.6	4.1	6.5	-0.3	-0.2	-0.5	1.4	0.2	
Month of Esfand	1.2	0.8	1.1	1.4	1.2	1.2	0.2	2.8	3.6	4.4	6.0	0.8	0.3	0.4	4.3	0.6	

**Annual and monthly percentage change of consumer price index for non-food items and services of all rural households**

**Base year:1395=100**

Period	Year																
	1381	1382	1383	1384	1385	1386	1387	1388	1389	1390	1391	1392	1393	1394	1395	1396	1397
<b>Year</b>	15.6	15.5	15.3	13.1	9.8	13.0	19.5	8.7	13.3	25.0	24.6	30.5	17.8	11.2	7.2	6.9	-
Month of Farvardin	3.5	1.8	1.7	1.2	0.9	1.1	2.6	0.3	0.7	0.1	0.8	1.6	1.6	0.9	0.7	1.3	0.7
Month of	3.5	1.8	1.7	1.2	0.9	1.1	2.3	0.3	1.1	1.8	1.1	2.2	4.2	1.0	0.3	0.4	1.2
Month of Khordad	1.0	1.3	1.0	1.2	0.7	1.4	2.6	0.5	0.9	1.9	1.4	2.4	1.5	1.4	0.5	0.1	1.5
Month of Tir	1.0	1.3	1.0	1.2	0.7	1.4	2.0	0.6	0.8	1.2	2.2	2.2	1.9	1.0	1.5	1.1	3.3
Month of Mordad	1.0	1.3	1.0	1.2	0.7	1.4	1.1	0.9	0.6	2.0	1.7	1.9	0.9	0.6	0.8	0.6	3.9
Month of Shahrivar	1.1	1.1	1.2	0.8	0.6	1.3	1.0	0.7	0.8	2.1	2.3	1.8	0.8	0.7	0.5	0.6	5.7
Month of Mehr	1.1	1.1	1.2	0.8	0.6	1.3	1.1	1.3	1.5	1.6	5.8	1.4	1.2	1.2	0.7	1.5	6.9
Month of Aban	1.1	1.1	1.2	0.8	0.6	1.3	0.6	0.8	0.8	1.1	3.4	1.2	0.9	0.5	0.3	0.4	2.5
Month of Azar	0.6	0.8	0.8	0.7	0.6	1.3	0.9	0.8	0.6	1.2	2.1	0.5	0.8	0.5	0.7	0.2	1.9
Month of Dey	0.6	0.8	0.8	0.7	0.6	1.3	0.4	0.5	12.6	1.0	2.4	0.5	1.0	0.2	0.7	-0.1	1.4
Month of Bahman	0.6	0.8	0.8	0.7	0.6	1.3	0.3	0.4	1.2	1.9	4.5	0.4	0.6	0.2	0.2	-0.2	
Month of Esfand	1.8	1.7	1.2	0.9	1.1	1.1	0.5	0.7	1.1	1.5	2.0	0.9	0.7	0.3	-0.1	0.3	



Statistical Centre of Iran

**Contact information:**

For more information on national CPI in current month, time series of CPI for national households and time series of national CPI for expenditure deciles, please visit: [www.amar.org.ir](http://www.amar.org.ir)

**Address:**

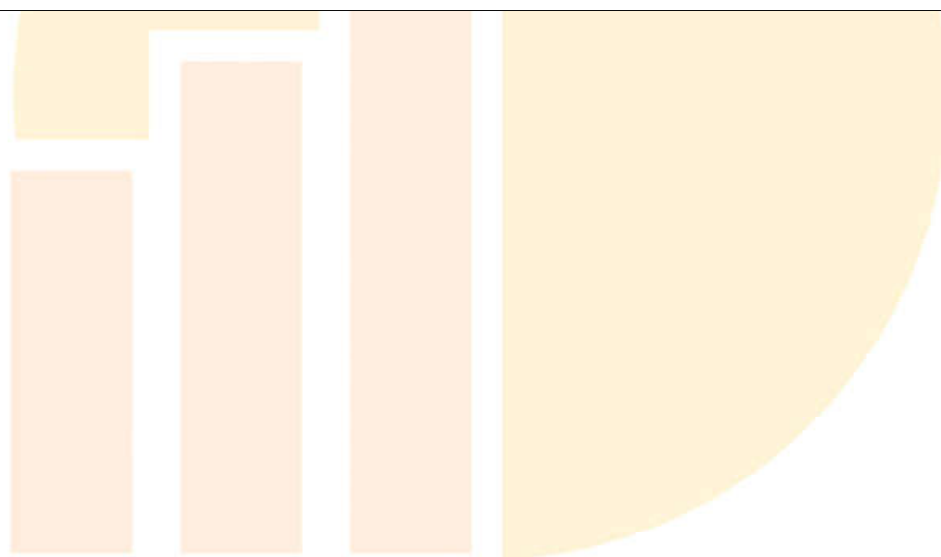
Statistical Centre of Iran

No. 1, corner of Rahee Moayeri St., Dr. Fatemi Ave., Tehran 1414663111, I. R. Iran

Tel: +98 21 88958189

Email: [int@sci.org.ir](mailto:int@sci.org.ir)

The release of the report for the Month of Bahman, the year 1397: end of February 2019



# Statistical Centre of Iran